

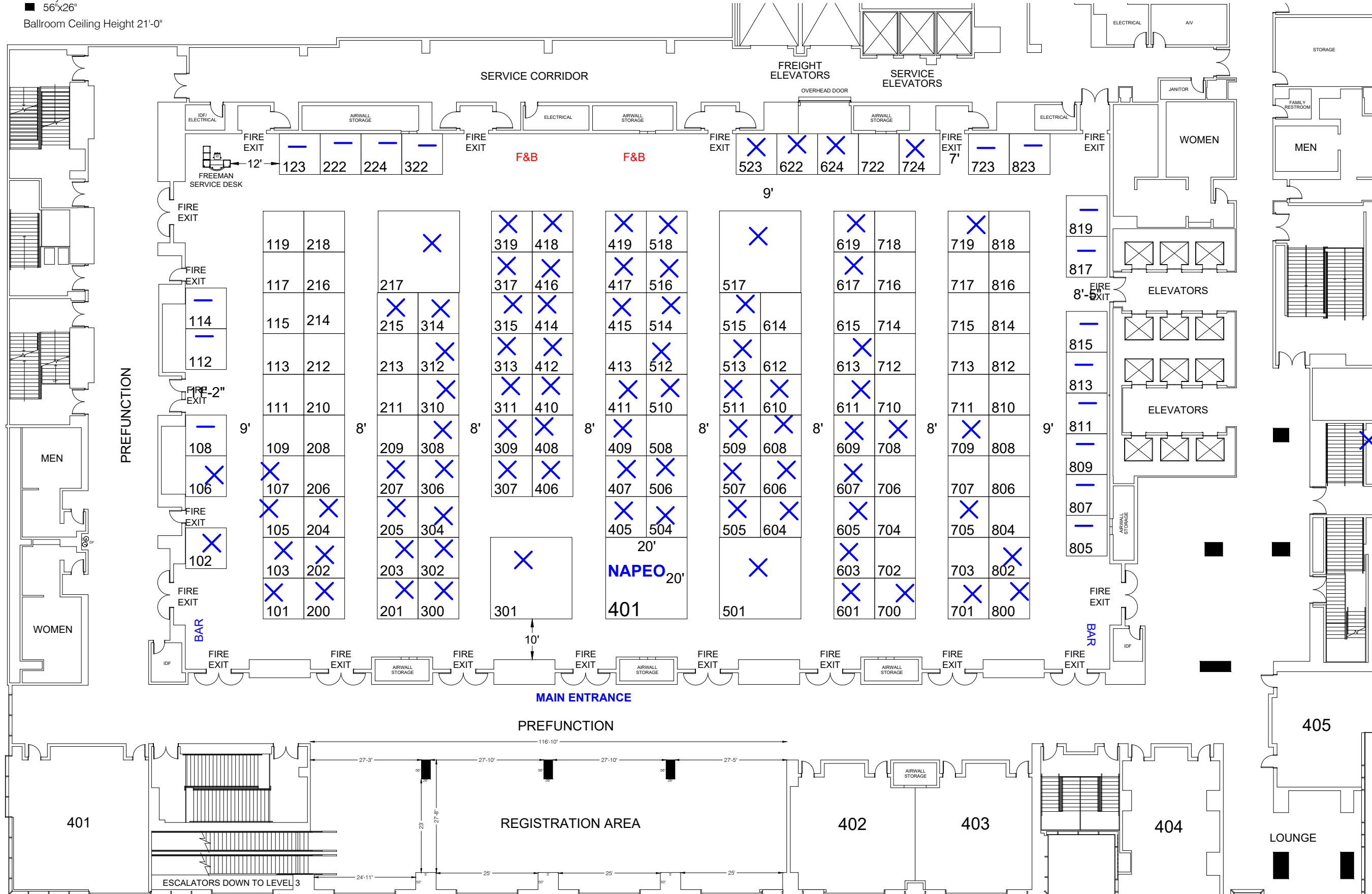
For exhibit inquiries, please reach out to:  
**Nancy Benoudiz**  
 Vice President, Membership Development  
 Phone: (703) 739-8169  
 Email: [nbenoudiz@napeo.org](mailto:nbenoudiz@napeo.org)

# NAPEO Annual Conference & Marketplace

10/06/25 - 10/07/25

JW MARRIOTT - GRAND BALLROOM - AUSTIN, TX

- Foyer Column  
 ■ 56"x26"  
 Ballroom Ceiling Height 21'-0"



**REVISION**  
 Date: 10/17/2024  
 By: Wilfred Wallen

---

**BOOTH COUNT**

Inventory as of 10/25/2024  
 7% of Sqft Rented  
 100% - 16,200 Sqft Available

Dimension	Size	Qty	SqFt	Rented	Available
10x10	100	158	15,800	0	158
10x20	400	1	400	0	1
<b>TOTAL</b>		<b>159</b>	<b>16,200</b>	<b>0</b>	<b>159</b>

**BLDG. LEGEND:**

**DRAWING INFO**

Passport Line Item Number:  
**#13668665**

Facility:  
 JW MARRIOTT

Facility Location:  
 GRAND BALLROOM  
 City & State:  
 AUSTIN, TX  
 Scale: CUSTOM  
 Project #: 536646  
 Acct. Sales: MEI STOBIEFSKI  
 Acct. Mgmt.: TESS GUNTHER  
 Started: 10/17/2024  
 Started By: WILFRED WALLEN  
 Prod. Branch: SAN ANTONIO

**Freeman.**

**Disclaimer** - This floor plan is preliminary and subject to change pending review and official approval by all authorities having jurisdiction. Every effort has been made to ensure the accuracy of all information contained on this floor plan. However, no warranties, either expressed or implied, are made with respect to this floor plan. If the location of building columns, utilities or other architectural components of the facility is a consideration in the construction or usage of an exhibit, it is the sole responsibility of the exhibitor to physically inspect the facility to verify all dimension and locations.

**Confidential and Proprietary** - The information contained herein is the proprietary information of Freeman and by accessing the information, the recipient agrees to keep the information confidential and not disclose it to any third party without the prior consent of Freeman. Recipient also agrees to only use the information for its internal evaluation purposes and for no other purpose, without the prior consent of Freeman.

File Path: C:\Vault\Designs\Projects\Natl Assn of Professional Employer Org Ann Mtg\NAPEO25\10Event\Floor Plans\NAPEO25\_L4.dwg | Tab Name: L13668665 FP